



Industrial Printer

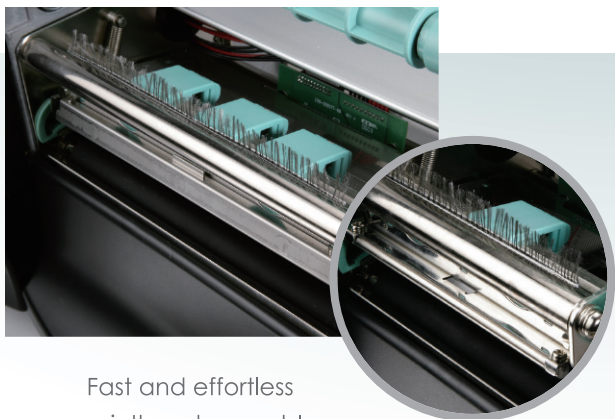
EZ6250i / EZ6350i

Die-casting and metal design

Heavy Duty 6" Industrial Barcode Printer

for your most demanding applications

Perfect for large size labels or special materials



Fast and effortless
printhead assembly
for efficient TPH switch



Automatic ribbon winding
inside/outside detection
Easy to install and simple to use

GoDEX

Quick TPH lock lever

EZ6250i/EZ6350i Series Printer Specifications

Model Name		EZ6250i	EZ6350i
Print Method		Thermal Transfer / Direct Thermal	
Resolution		203 dpi (8 dot/mm)	300 dpi (12 dot/mm)
Print Speed		7 IPS (177 mm/s)	5 IPS (127 mm/s)
Print Width		6.61" (168 mm)	
Print Length		Min. 0.16" (4 mm)** ; Max. 70" (1778 mm) Min. 0.16" (4 mm)** ; Max. 30" (762 mm)	
Processor		32-bit RISC CPU	
Memory	Flash SDRAM	8 MB Flash (4 MB for user storage) 32 MB	
Sensor Type		Adjustable reflective sensor and transmissive sensor, left aligned	
Media	Type	Continuous form, gap labels, black mark sensing, and punched hole; label length set by auto sensing or programming	
	Width	Tear : 2" (50.8 mm) Min. - 7" (178 mm) Max. Cutter : 6.5" (165 mm) Max.)	
	Thickness	Peeler with Rewind : 7" (178 mm) Max. 0.003" (0.06 mm) Min. - 0.01" (0.25 mm) Max	
	Label roll diameter	Max. 8" (203.2 mm) with 3" (76.2 mm) core / Max. 6" (152.4 mm) with 1.5" (38.1 mm) core	
	Core diameter	1.5" (38.1 mm) - 3" (76.2 mm)	
Ribbon	Types	Wax, wax/resin, resin	
	Length	Max. 1471' (450 m)	
	Width	Min 2.36" – Max. 6.85" (60 mm - 174 mm)	
	Ribbon roll diameter	2.99" (76 mm) Max	
	Core diameter	1" (25.4 mm)	
Printer Language		EZPL, GEPL, GZPL auto switch ,GDPL optional	
Software	Label design software	GoLabel (for EZPL only)	
	Driver	Windows 2000, XP, Vista, Windows 7, 8.1 and 10 , Windows Server 2003 , 2008 & 2010 - MAC - Linux	
	DLL	Win CE, .NET, Andriod, Windows Mobile, Windows 2000 / XP / VISTA / Windows 7 / Windows 8.1/Windows 10	
Resident Fonts	Bitmap Fonts	6, 8, 10, 12, 14, 18, 24, 30, 16X26 and OCR A & B Bitmap fonts 90°, 180°, 270° rotatable, single characters 90°, 180°, 270° rotatable Bitmap fonts 8 times expandable in horizontal and vertical directions	
	TTF Fonts	TTF Fonts (Bold / Italic / Underline) . 0°,90°, 180°, 270° rotatable	
Download Fonts	Bitmap Fonts	90°, 180°, 270° rotatable, single characters 90°, 180°, 270° rotatable 16x16, 24x24. Traditional Chinese (BIG-5), Simplified Chinese(GB2312), Japanese (S-JIS), Korean (KS-X1001)	
	Asian Fonts	90°, 180°, 270° rotatable and 8 times expandable in horizontal and vertical directions	
Barcodes	1-D Bar Codes	TTF Fonts (Bold / Italic / Underline) . 0°,90°, 180°, 270° rotatable China Postal Code, Codabar, Code 11, Code 32, Code 39, Code 93, Code 128 (subset A, B, C), EAN-8, EAN-13, EAN 8/13 (with 2 & 5 digits extension), EAN 128, FIM, German Post Code, GS1 DataBar, HIBC, Industrial 2 of 5 , Interleaved 2-of-5 (I 2 of 5), Interleaved 2- of 5 with Shipping Bearer Bars, ISBT – 128, ITF 14, Japanese Postnet, Logmars, MSI, Postnet, Plessey, Planet 11 & 13 digit, RPS 128, Random Weight, Standard 2 of 5, Telepen, UPC-A, UPC-E, UPC-A and UPC-E with EAN 2 or 5 digit extension, UCC 128, UCC/EAN-128 K-Mart	
	2-D Bar Codes	Aztec code, Code 49, Codablock F , Datamatrix code, MaxiCode, Micro PDF417, Micro QR code, PDF417, QR code, TLC 39	
Code Pages		Codepage 437, 737, 850, 851, 852, 855, 857, 860, 861, 862, 863, 865, 866, 869, Windows 1250, 1251, 1252, 1253, 1254, 1255, 1257 Unicode UTF8 · UTF16BE · UTF16LE	
Graphics		Resident graphic file types are BMP and PCX, other graphic formats are downloadable from the software	
Interfaces		<ul style="list-style-type: none"> • USB 2.0 (B-Type) • IEEE 802.3 10/100 Base-Tx Ethernet port (RJ-45) 	<ul style="list-style-type: none"> • Serial port: RS-232 (DB-9) • USB Host (A-Type)
Control Panel		<ul style="list-style-type: none"> • Color TFT LCD with navigation button • Calibration button • Power on/off button 	
RTC		Standard	
Power		Auto Switching 100-240V AC, 50-60Hz	
Environment	Operation temperature	41°F to 104°F (5°C to 40°C)	
	Storage temperature	-4°F to 140°F (-20°C to 60°C)	
Humidity	Operation	20-85%, non-condensing	
	Storage	10-90%, non-condensing	
Agency Approvals		CE (EMC) · FCC Class B · CB · UL · cUL · CCC	
Dimension		Length : 20.31" (516 mm) Height : 11.22" (285 mm) Width : 13.58" (345 mm) Weight : 36.8 lbs (16.7Kg), excluding consumables	
Options		Cutter Module Internal Rewinder with Label Dispenser Parallel port adapter module (Centronic female 36-pin) Applicator Interface (1 input, 3 outputs, power 500mA @ 5V) External label rewinder	

* Specifications are subject to change without notice. All company and/or product names are trademarks and/or registered trademarks of their respective owners.

** Minimum print height and maximum print speed specification compliance can be dependent on non-standard material variables such as label type, thickness, spacing, liner construction, etc. GoDEX is pleased to test non-standard materials for minimum print height, and maximum print speed capability.

Applications

Applications for Labels & Barcodes

EZ6250i / EZ6350i as versatile as for most applications.



Logistics

shipping label, package tracing, package label, package receipt etc.

Warehouse

shelf label, product label, stocking management, exterior/pallet labeling etc.

Manufacturing

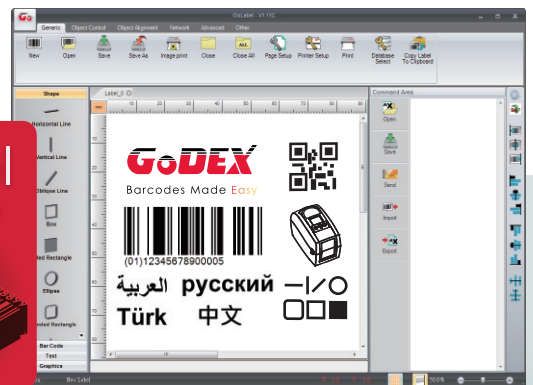
product label, manufacturing label, exterior/pallet label, trade, stocking and document management etc.

GoDEX LABEL DESIGN SOFTWARE

GoLabel Software / User Friendly

GoLabel is based on a WYSIWYG (what you see is what you get) user interface, makes everything so easy for you to create and print barcode labels. GoLabel is the first-choice label design software that you can't miss it!

Go visit www.godexintl.com and download GoLabel to experience it!



GoDEX RIBBONS

High quality GoDEX thermal transfer ribbons.

GoDEX offers premium thermal transfer ribbons that will fit most of your printing applications.

- Wax
- Wax/ Resin
- Resin
- Near Edge

